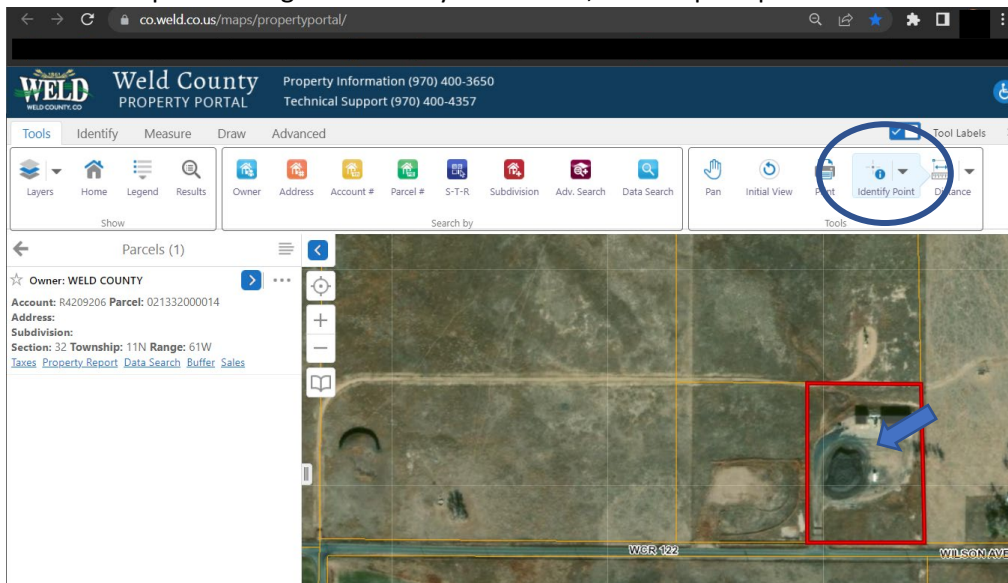


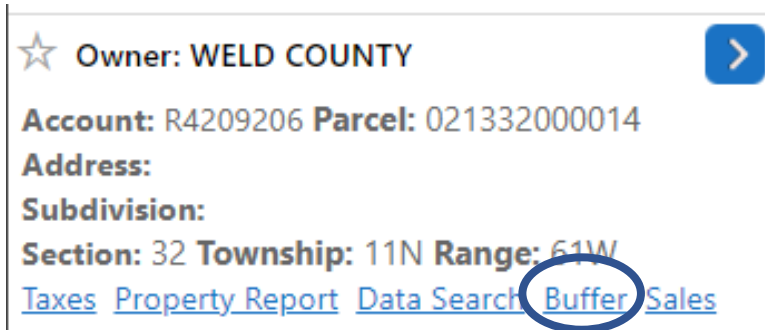
Weld County

Certified List of Surrounding Property Owners Instructions Affidavit of Property Owners – Surface Estate/Buffer Report Instructions

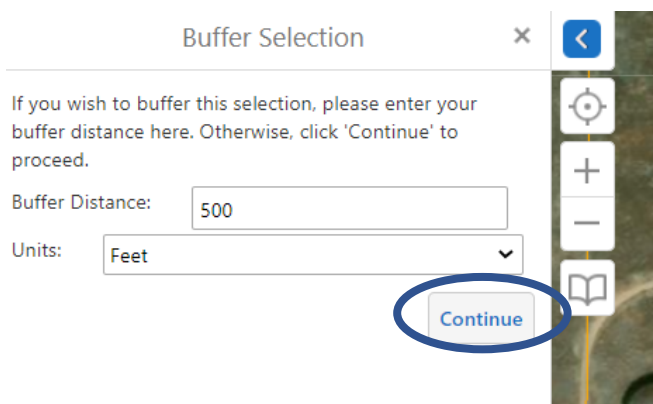
1. Locate property on Weld County Property Portal: <https://www.co.weld.co.us/maps/propertyportal/>
2. Click on the parcel using the “Identify Point” tool, which opens parcel information on the left sidebar.



3. Click the blue “Buffer” link.



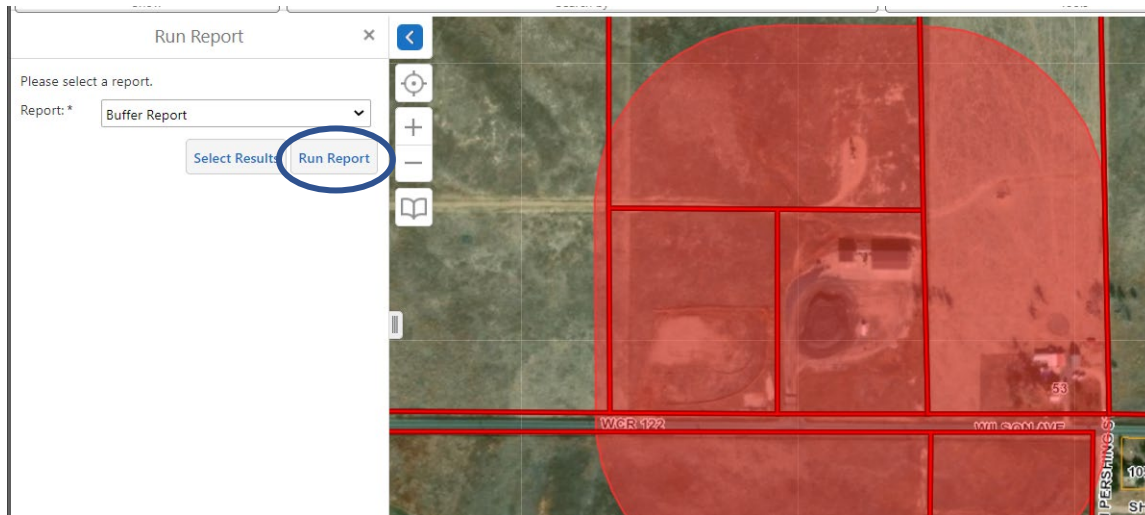
4. Select “Continue”, leaving the distance set to 500 feet. The screen will flash. Wait until the next instruction screen shows.



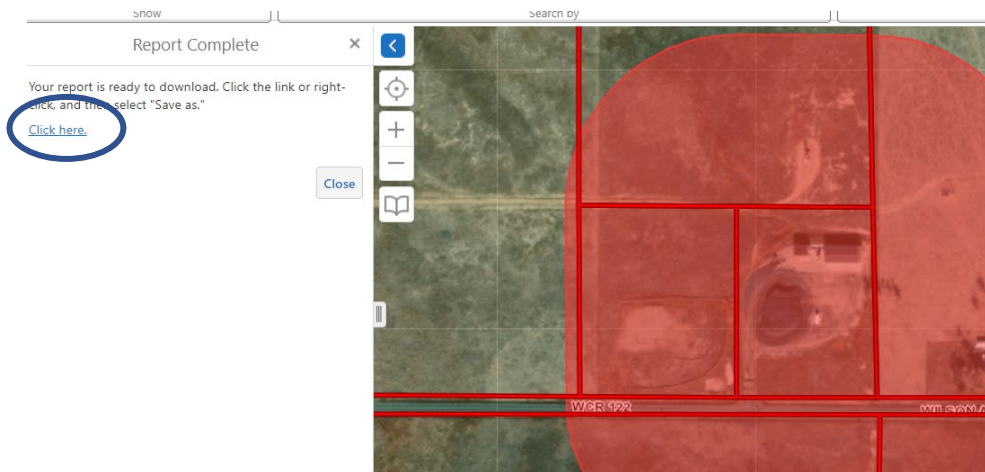
Weld County

Surrounding Property Owner/Affidavit of Property Owners – Surface Estate/Buffer Report Instructions

5. Select “Run Report”. The screen will flash. Wait until the next instruction screen shows. Screen will show the properties within 500 feet outlined in red and the buffer will be red.



6. Select “Click here.” The .pdf report will load in a new tab.



7. Be sure to download the report and **sign it** prior to submitting with an application.

