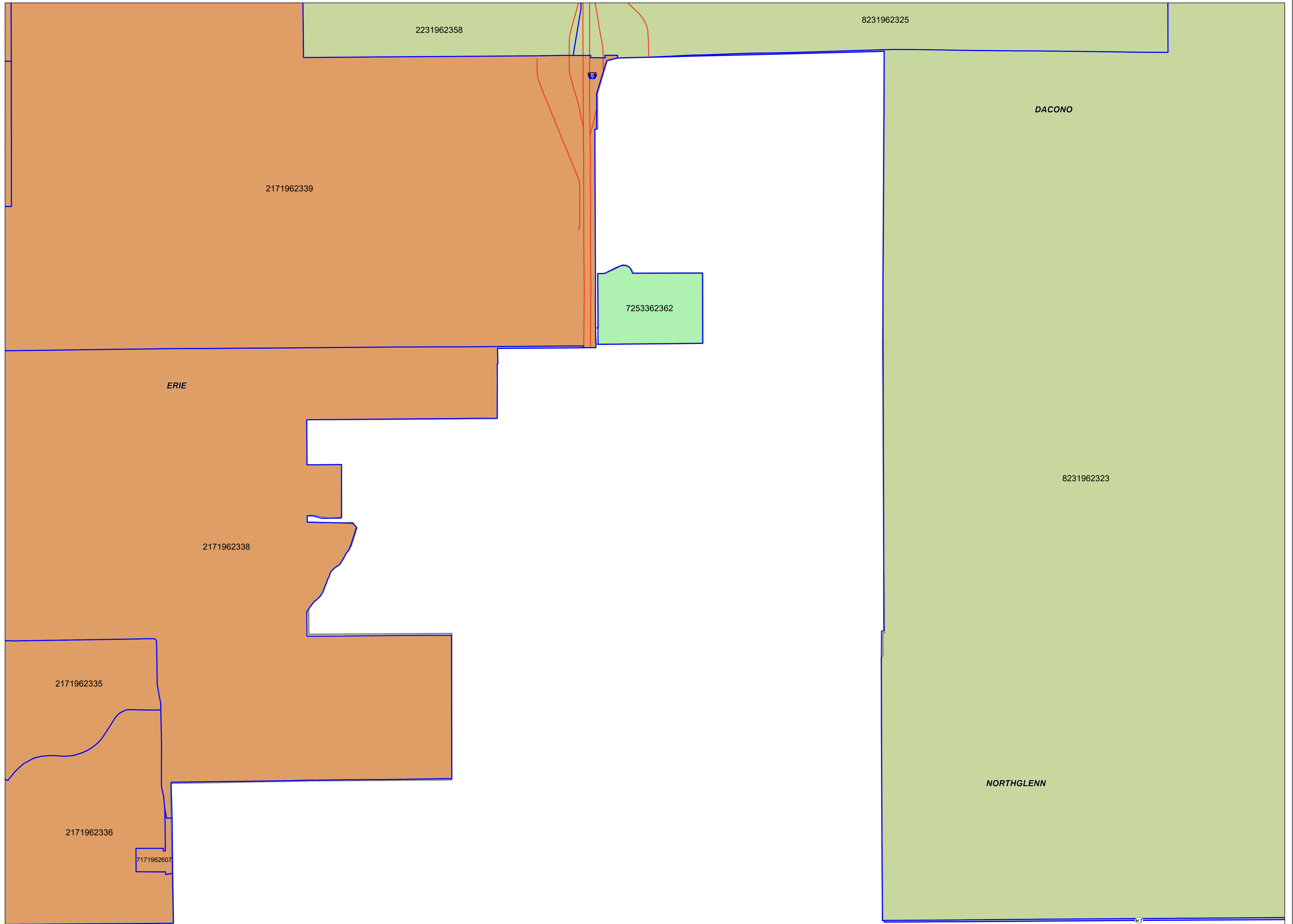


Weld County Senate District 25

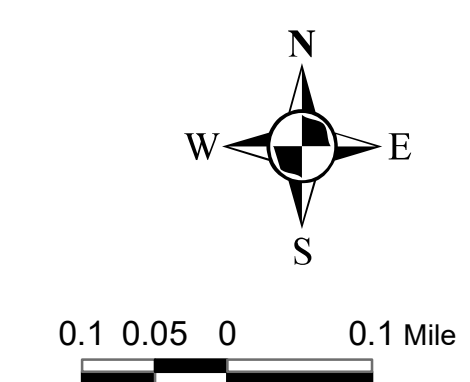


5 7 9 11 13

FROM THE OFFICE OF
CARLY KOPPES
WELD COUNTY CLERK AND RECORDER

| | | | |
|--|--------------------|--|-------------|
| | Senate District 1 | | Precinct |
| | Senate District 13 | | Weld County |
| | Senate District 17 | | Highway |
| | Senate District 23 | | |
| | Senate District 25 | | |

Precinct Number Legend
1st Digit = US Congressional District
2nd & 3rd Digits = Senate District
4th & 5th Digits = House District
6th & 7th Digits = County ID Number
8th Digit = Commissioner District
9th & 10th Digits = County Assigned Number



Disclaimer
This product has been developed solely for internal use only by Weld County. The GIS database, applications, and data in this product is subject to constant change and the accuracy and completeness cannot be and is not guaranteed. The designation of lots or parcels or land uses in the database does not imply that the lot or parcels were legally created or that the land uses comply with applicable State or Local law. UNDER NO CIRCUMSTANCE SHALL ANY PART OF THIS PRODUCT BE USED FOR FORMAL PURPOSES. WELD COUNTY MAKES NO WARRANTIES OR GUARANTEES, EITHER EXPRESSED OR IMPLIED AS TO THE COMPLETENESS, ACCURACY, OR CORRECTNESS OF SUCH PRODUCT, NOR ACCEPTS ANY LIABILITY ARISING FROM ANY INCORRECT, INCOMPLETE OR MISLEADING INFORMATION CONTAINED THEREIN.