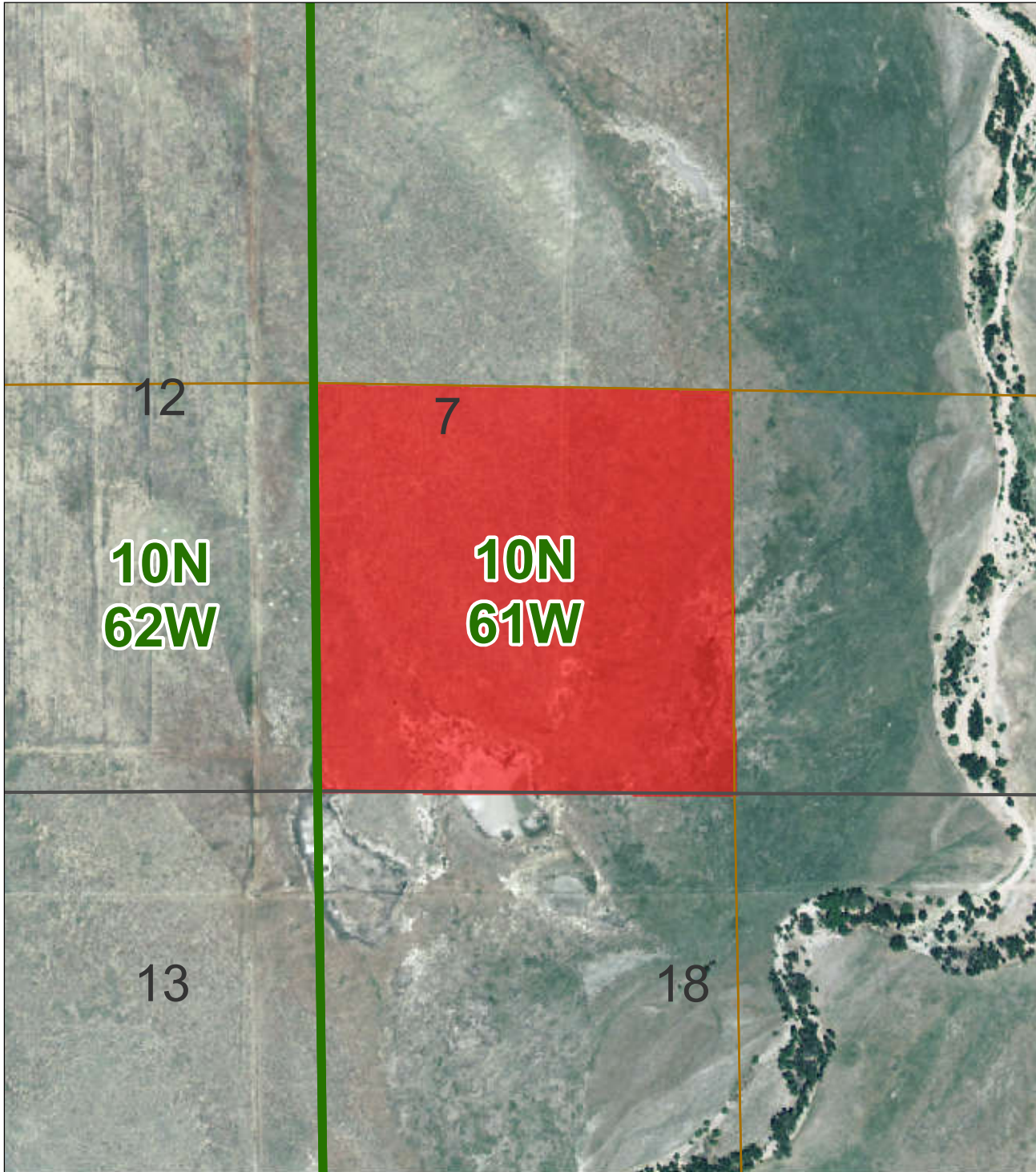


# Oil & Gas Lease Oral Auction - LE0150



## Weld County

12N 67W	12N 66W	12N 65W	12N 64W	12N 63W	12N 62W	12N 61W	12N 60W	12N 59W	12N 58W	12N 57W	12N 56W
11N 67W	11N 66W	11N 65W	11N 64W	11N 63W	11N 62W	11N 61W	11N 60W	11N 59W	11N 58W	11N 57W	11N 56W
10N 67W	10N 66W	10N 65W	10N 64W	10N 63W	10N 62W	10N 61W	10N 60W	10N 59W	10N 58W	10N 57W	10N 56W
09N 67W	09N 66W	09N 65W	09N 64W	09N 63W	09N 62W	09N 61W	09N 60W	09N 59W	09N 58W	09N 57W	09N 56W
08N 67W	08N 66W	08N 65W	08N 64W	08N 63W	08N 62W	08N 61W	08N 60W	08N 59W	08N 58W	08N 57W	08N 56W
07N 67W	07N 66W	07N 65W	07N 64W	07N 63W	07N 62W	07N 61W	07N 60W	07N 59W	07N 58W	07N 57W	07N 56W
06N 67W	06N 66W	06N 65W	06N 64W	06N 63W	06N 62W	06N 61W					
05N 67W	05N 66W	05N 65W	05N 64W	05N 63W	05N 62W	05N 61W					
04N 68W	04N 67W	04N 66W	04N 65W	04N 64W	04N 63W	04N 62W	04N 61W				
03N 68W	03N 67W	03N 66W	03N 65W	03N 64W	03N 63W	03N 62W	03N 61W				
02N 68W	02N 67W	02N 66W	02N 65W	02N 64W	02N 63W	02N 62W	02N 61W				
01N 68W	01N 67W	01N 66W	01N 65W	01N 64W	01N 63W	01N 62W	01N 61W				

### SECTION 7 T10N R61W

SW1/4 SW1/4  
43.25 acres

Township / Range  
 Section  
 Quarter section



1 inch = 500 feet

**Disclaimer**

This product has been developed solely for internal use only by Weld County. The GIS database and data in the product is subject to constant change and the accuracy and completeness cannot be and is not guaranteed. The designation of lots or parcels or land uses in the data base does not imply that the lots or parcels were legally created or that the land uses comply with applicable State or Local law. UNDER NO CIRCUMSTANCE SHALL THE PRODUCT BE USED FOR FINAL DESIGN PURPOSES. WELD COUNTY MAKES NO WARRANTIES OR GUARANTEES, EITHER EXPRESSED OR IMPLIED AS TO THE COMPLETENESS, ACCURACY, OR CORRECTNESS OF SUCH PRODUCT, NOR ACCEPTS ANY LIABILITY ARISING FROM ANY INCORRECT, INCOMPLETE OR MISLEADING INFORMATION CONTAINED THEREIN. No part of the product may be copied, reproduced or transmitted in any form or by any means whatsoever, including, but not limited to, electronic, mechanical, photocopying, recording, scanning, or by any information retrieval system or any non-approved purpose without the express written consent of Weld County.