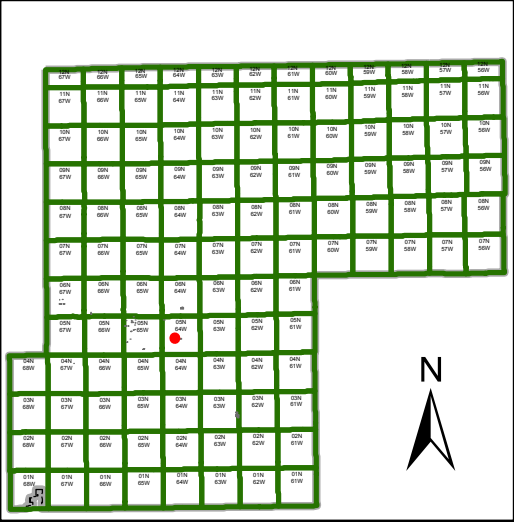


- Lease tract
- Township/Range
- Section
- Qtr Sections
- Parcels



**Section 24, T3N, R63W**

3. SW4 NW4 SE4, 10 acres, LE0190-15

1 inch = 300 feet

**Disclaimer**

This product has been developed solely for internal use only by Weld County. The GIS database and data in the product is subject to constant change and the accuracy and completeness cannot be and is not guaranteed. The designation of lots or parcels or land uses in the data base does not imply that the lots or parcels were legally created or that the land uses comply with applicable State or Local law. UNDER NO CIRCUMSTANCE SHALL THE PRODUCT BE USED FOR FINAL DESIGN PURPOSES. WELD COUNTY MAKES NO WARRANTIES OR GUARANTEES, EITHER EXPRESSED OR IMPLIED AS TO THE COMPLETENESS, ACCURACY, OR CORRECTNESS OF SUCH PRODUCT, NOR ACCEPTS ANY LIABILITY ARISING FROM ANY INCORRECT, INCOMPLETE OR MISLEADING INFORMATION CONTAINED THEREIN. No part of the product may be copied, reproduced or transmitted in any form or by any means whatsoever, including, but not limited to, electronic, mechanical, photocopying, recording, scanning, or by any information retrieval system or any non-approved purpose without the express written consent of Weld County.