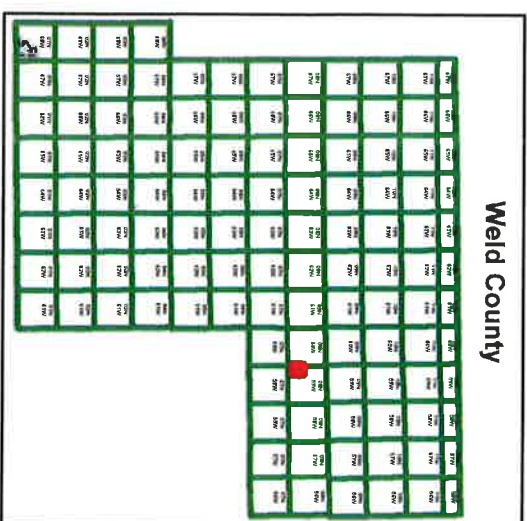
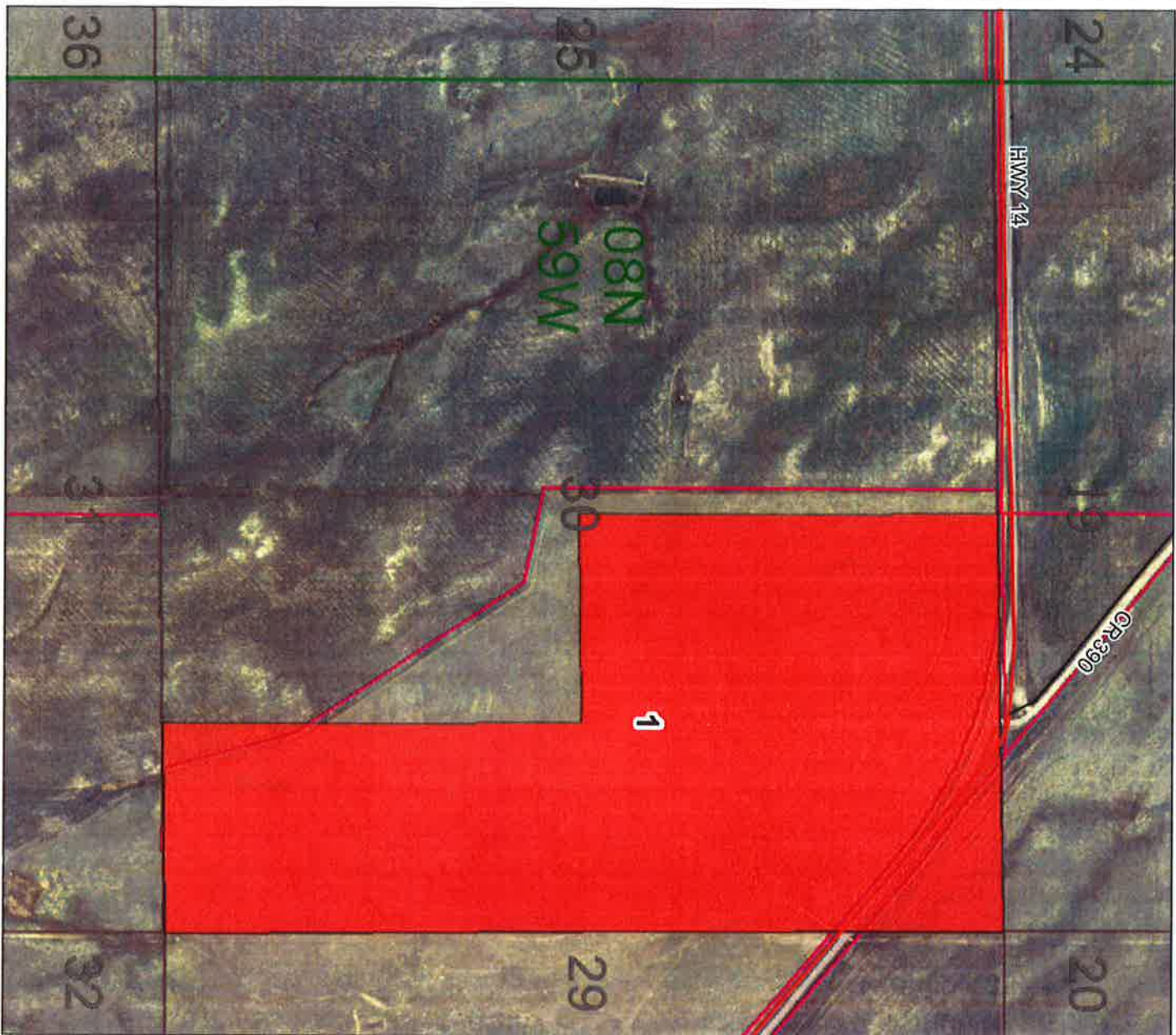


Oil and Gas Lease Oral Auction



S30, T8N, R59W

ID	LEGAL
1	NE1/4, E1/2 SE1/4 LE0043

— Highway
— Road
 Township / Range
 Parcel

1 inch = 1,000 feet



Disclaimer
 This product has been developed solely for internal use only by Weld County. The GIS database and data in this product is subject to constant change and the accuracy and completeness cannot be and is not guaranteed. The user of this product shall be responsible for verifying the accuracy of the data and that the lots or parcels were legally created or that the land uses comply with applicable State or Local Law. UNDER NO CIRCUMSTANCE SHALL THE PRODUCT BE USED FOR FINAL ENGINEERING, CONSTRUCTION, OR ANY OTHER PURPOSE THAT REQUIRES PROFESSIONAL LIABILITY. THE USER EXPRESSLY WAIVES ANY WARRANTIES OR GUARANTEES, INCLUDING MERCHANTABILITY, FITNESS FOR A PARTICULAR PURPOSE, AND NON-INFRINGEMENT. ANY INCOMPLETE OR MISLEADING INFORMATION CONTAINED HEREIN, No part of this product may be copied, reproduced or transmitted in any form or by any means, electronic or mechanical, including photocopying, recording, or by any information retrieval system or any non-approved means, without the express written consent of Weld County.