



Public Health
Prevent. Promote. Protect.



COVID-19 Townhall #8

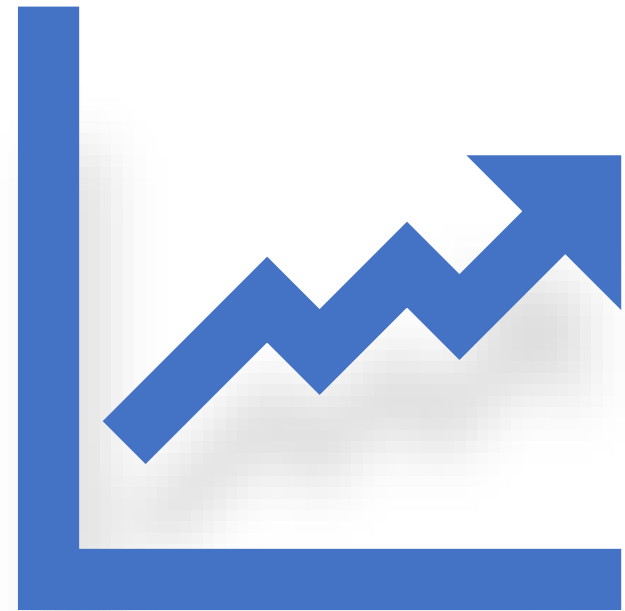
Weld County Department of Public Health & Environment

May 14, 2020

Trends in Case Counts, Deaths, Testing, Hospitalizations, and Outbreaks

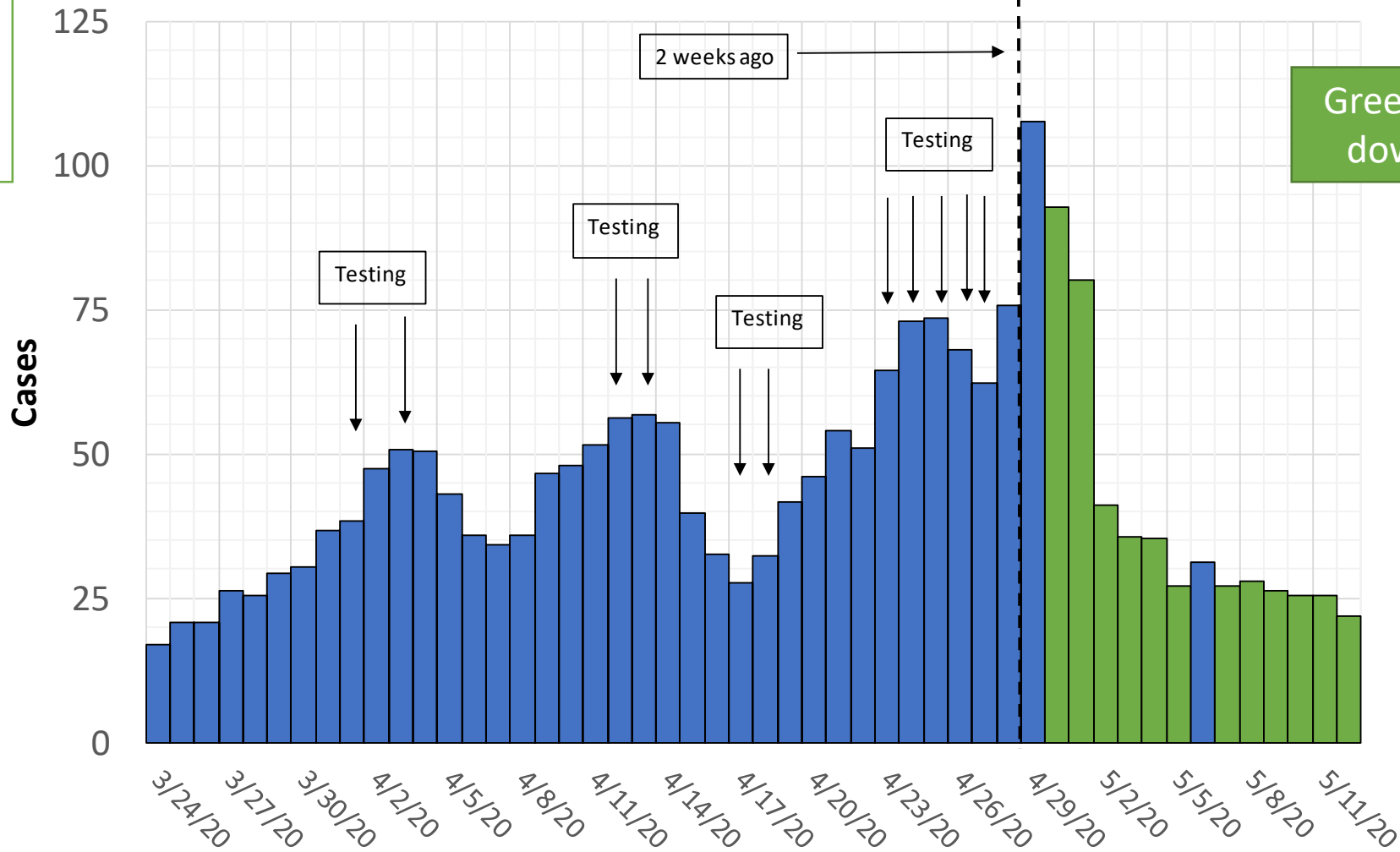
Weld County

May 14 2020



Note: Interpret with caution. Community testing events and lags in case reporting make interpreting trends difficult.

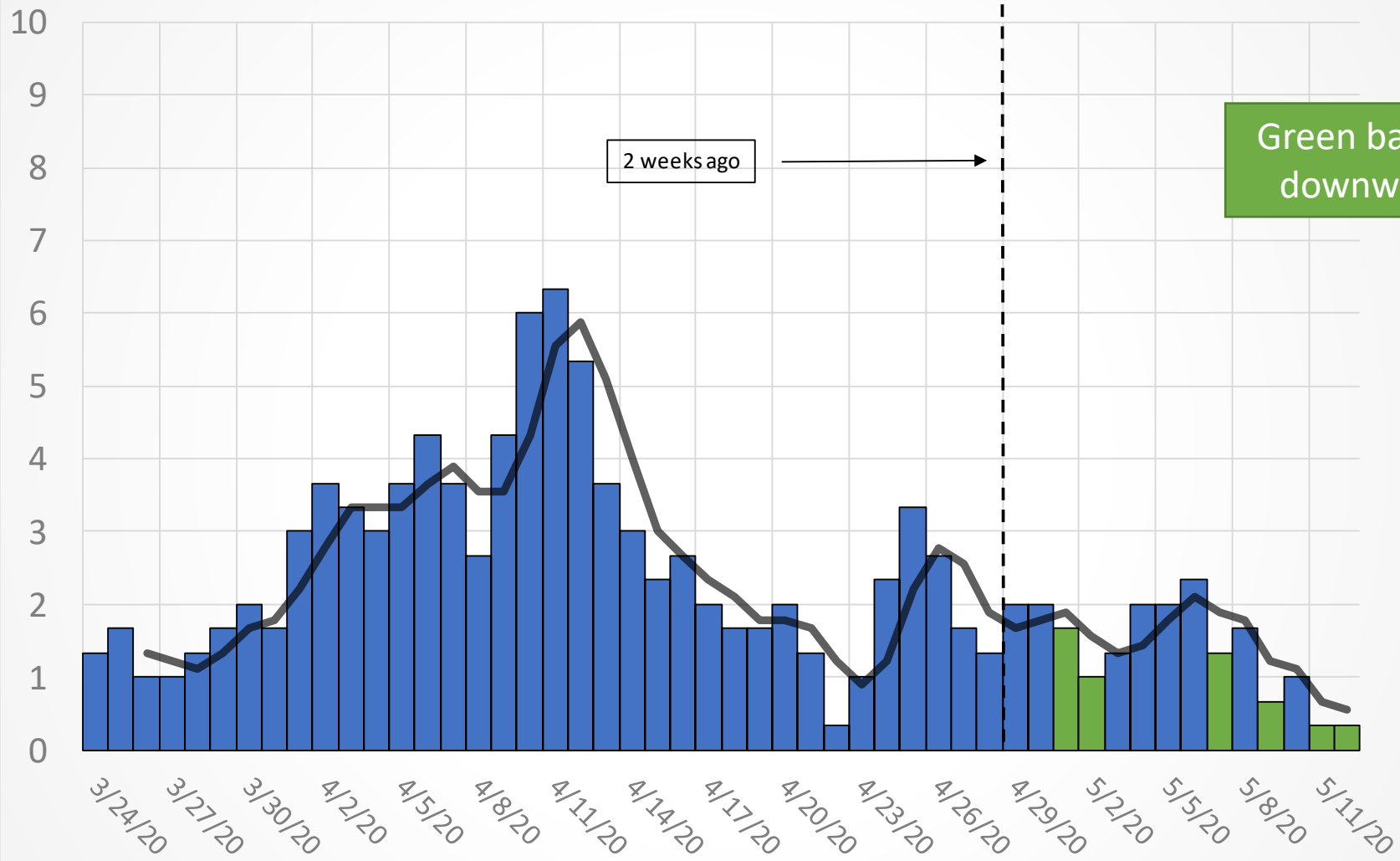
3-Day Running Average of New Cases per Day by Report Date, Weld County



NOTE: Each bar represents the average of the prior three days of daily new case counts. Known probable or confirmed cases only.

As of 5/12/2020

3-Day Running Average in Deaths per Day by Death Date, Weld County



NOTE: Each bar represents the average of the prior three days of daily new death counts. Known probable or confirmed cases only.

As of 5/12/2020

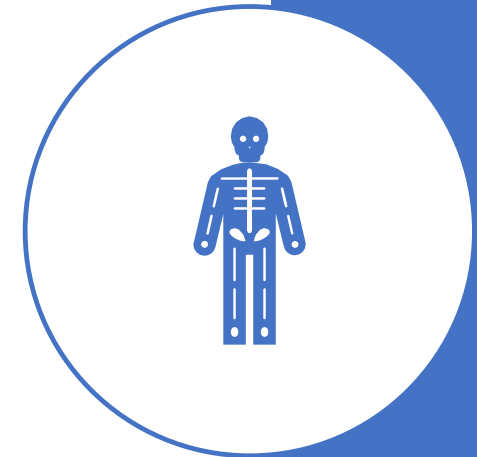
Percent of Positive Test Results

In April, Weld County's rate of positive test results at targeted testing events was 18%

Colorado overall rate of positive test results on April 30th was also 18%

Weld County Testing Options

- AIMS - drive-thru testing in partnership with UCHHealth in Greeley
 - M – F, 9 am – 5 pm, Saturday, 10 am – 2 pm
 - No appointment but doctors note needed
- Nextcare Urgent Care curbside testing weekdays and weekends in Greeley and Longmont
- Banner Health, by appointment, see website
- Kaiser Permanente/CDPHE
 - By appointment, for any health care workers and first responders
 - Don't have to be a Kaiser member
 - Two sites in NoCo – Larimer County Health Department in Ft. Collins and Clinica Family Health in Lafayette
- UNC - drive-thru testing in partnership with King Soopers and State of CO
 - DATES: May 14-16, May 21-23, and May 29-30
 - Must register at: <https://www.thelittleclinic.com/drivethru-testing>

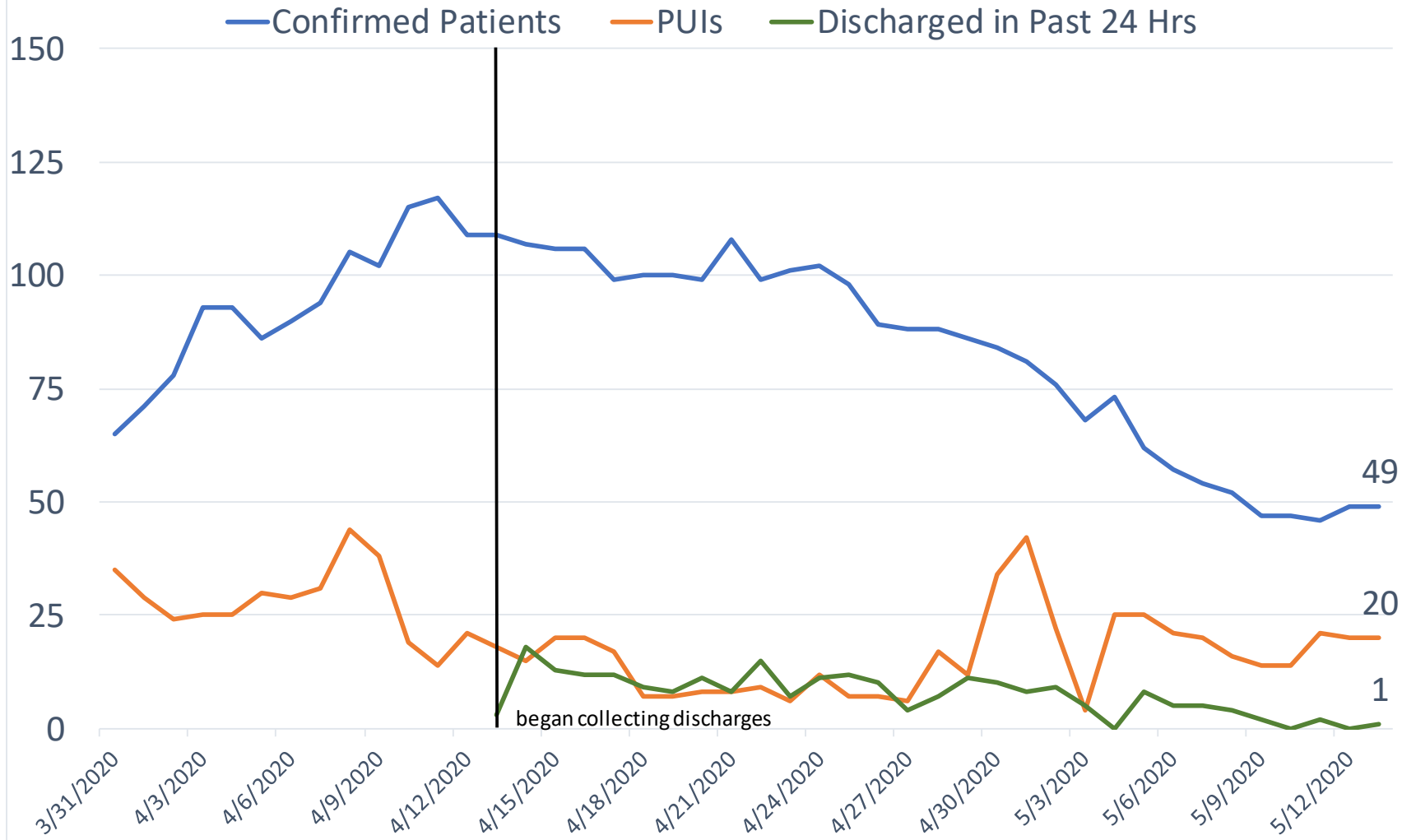


76% of Weld County COVID-19 hospitalized cases were admitted to hospitals in Greeley.

86% were admitted to Region 4 hospitals.

Weld County COVID-19 Cases Hospitalization Location	Percent
North Colorado Medical Center (<i>Region 4</i>)	46.2
UCHealth Greeley Hospital (<i>Region 4</i>)	29.5
Medical Center of the Rockies (<i>Region 4</i>)	9.4
Poudre Valley Hospital	3.3
UCHealth Longs Peak Hospital	2.8
Good Samaritan Med Center	1.8
University Hospital	0.9
Boulder Community Hospital	0.7
Banner Fort Collins Medical Center	0.4
Childrens Hospital	0.4
McKee Medical Center (<i>Region 4</i>)	0.4
Presbyterian St.Lukes Medical Center	0.4
Rose Medical Center	0.4
St Joseph Hospital	0.4
Denver Health Medical Center	0.2
Longmont United Hospital	0.2
Platte Valley Medical Center	0.2
St Anthony Hosp North	0.2
UNKNOWN	2.0
Total	100.0

Region 4 Hospitals



A total of 230 COVID-19 cases have been discharged since April 13, 2020

Source: EMResource; Hospitals included are: NCMC, UCGreeley, MCR,

As of 5/13/2020

Outbreak Name	Date Outbreak Declared
Fairacres Manor	3/24/2020
Centennial Healthcare Center	3/27/2020
Mountain States Rosen Company	3/31/2020
Aurora Organic Dairy - Platteville	4/1/2020
Weld County Jail	4/1/2020
JBS	4/3/2020
The Center at Center Place	4/5/2020
Good Samaritan Society - Bonell Community	4/12/2020
Columbine Commons Health and Rehab	4/13/2020
Intervention Community Corrections Services - Weld	4/17/2020
Kenton Manor - SAVASeniorCare	4/17/2020
Weld County Work Release Program	4/21/2020
Leprino Foods - Greeley	4/24/2020
Grace Pointe Senior Care	5/12/2020
JBS Corporate	5/13/2020

Outbreak Investigation Cases in Weld County 5/13/2020

Setting Type	# Facilities	COVID Confirmed	COVID Probable	Deaths
Healthcare Facility	7	213	115	46
Factory/Other	4	345	1	7
Jail/Corrections	3	48	75	1
Office/workplace	1	5	0	1

Source: CDPHE Outbreak Investigation Data List

Conclusions

- Case counts are declining but it may be due to testing events and reporting delays. More time is needed to determine if cases are declining.
- On average, we are seeing about 22 new cases per day.
- On average over the past 14 days, about 1 to 2 deaths from COVID-19 occur.
- COVID-19 hospitalizations are declining.

COVID-19 is still
spreading in
Weld County.

COVID-19 Prevalence - Key Questions to Consider

- Is the prevalence of COVID-19 cases low enough to be contained by an epi response?
 - Is the number of new cases per day low?
 - Is there a declining number of new cases over the previous 14 days?
 - Is there a declining number of positive tests (as a percentage of total tests) over the previous 14 days?

Reminders

- Two resources for checking guidance documents:
- www.weldhealth.org
- <https://covid19.colorado.gov/guidance-resources>
- Call our COVID-19 hotline: 970-400-2111



Shifting to the New Normal

Ongoing Public Health Work



Public Health

Questions?

Thank You!

