



OFFICE OF THE BOARD OF COMMISSIONERS

Phone: 970-336-7204 Fax: 970-352-0242
1150 O St., P.O. Box 758, Greeley, CO 80632

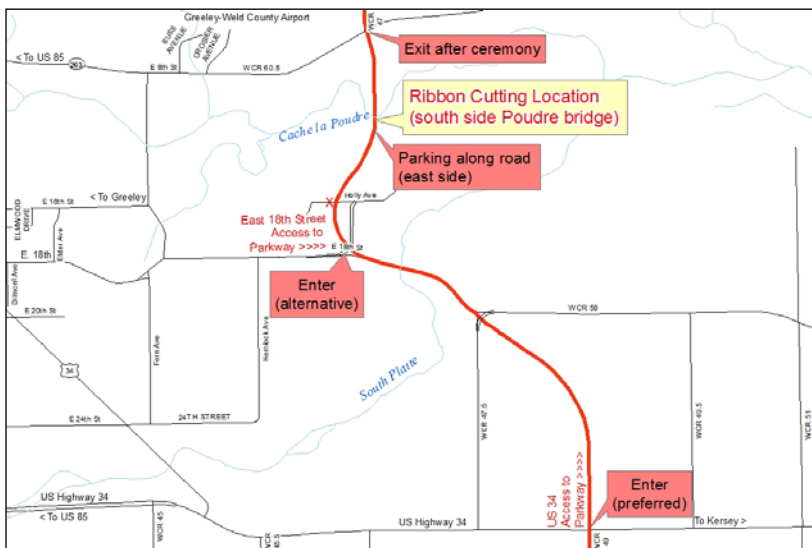
NEWS RELEASE

Date: 11/2/15

Contact: Jennifer Finch, 970-336-7203

WELD COUNTY COMMISSIONERS INVITE THE PUBLIC TO ATTEND THE WELD COUNTY PARKWAY RIBBON CUTTING CEREMONY ON NOVEMBER 10

WELD COUNTY, CO – The Weld County Board of Commissioners invites the public to the Weld County Parkway ribbon cutting and grand opening on Tuesday, November 10, 2015, at 2:00 p.m. on the new Cache la Poudre River Bridge. Attendees need to enter the Parkway from the south at WCR 49 and U.S. Highway 34 and drive approximately three miles north of U.S. Highway 34. Attendees will drive over the new South Platte River Bridge before parking along the east side of the road prior to the start of the Cache la Poudre River Bridge. The new four-lane concrete road and two new bridges will officially open to the public at 5:00 p.m. that evening.



"This new 3.5-mile road connecting U.S. Highway 34 north to WCR 60.5 will significantly help the flow of north-south traffic within Weld County," said Commissioner Chair Barbara Kirkmeyer.

"Opening the Parkway will be a very exciting day for Weld County," said Commissioner Sean Conway, Coordinator for the Department of Public Works. "The Board is extremely proud of the time and dedication Public Works put in to completing this project."

For more information about the Weld County Parkway, visit www.weldgov.com.

###

Map of the Parkway showing entrances as well as parking for the ribbon cutting on Tuesday, November 10, 2015 at 2:00 p.m.