



OFFICE OF EMERGENCY MANAGEMENT

Director, Roy Rudisill

Phone: 970-304-6540

Fax: 970-336-7242

1150 O Street

P.O. Box 758

Greeley, CO 80632

PRESS RELEASE

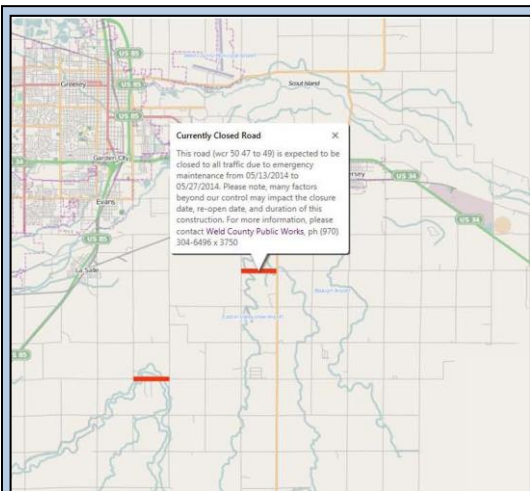
Date: 5/15/14

Contact: Jennifer Finch, (970)336-7203

Re: Infrastructure Map

COUNTY DEBUTS NEW REAL-TIME ROAD MAP

WELD COUNTY, CO – After weeks of designing, testing and finalizing, Weld County is proud to announce a debut of a new real-time road map for the public.



QUICK TIPS:

- the default view shows current (red lines) and future (purple lines) road maintenance projects on county roads

-click the blue “I want to...” box, then click “Change visible map layers”

-check mark the box by Road Maintenance to learn which roads are maintained by the county and which are maintained by the state or a municipality

-click the plus sign next to “Road Maintenance” or “Road Closures” to activate more map layers

-type an address into the search bar (on the right corner) to view a specific location

“After the 2013 Flood, several county departments came together to discuss new ways to better communicate road-closure information to the public,” said Commissioner Chairman Douglas Rademacher. “While we were able to successfully share closure information on a map and on our social media pages, we knew we could find a better way to get that information to the public as quickly as possible.”

The Public Works Department, GIS, the Office of Emergency Management (OEM) and Public Information worked together with the Board of Commissioners to develop a new platform that would allow the public to view road closure and road maintenance information in real-time.

During normal day-to-day operations, Public Works will use the map to communicate road closures and future road maintenance projects to the public. During emergency operations, such as the 2013 flood, Public Works, GIS and OEM will utilize the map to quickly and accurately show road closures and openings as they happen.

“It’s our hope that the public finds this map a better tool for learning not only about road closures but also alternate routes during an emergency,” said Commissioner Garcia, Coordinator for the Department of Public Works.

To use the map, please go to www.weldgov.com/maps/publicinfrastructure or to www.weldgov.com.