



OFFICE OF THE BOARD OF COMMISSIONERS

Phone: 970-336-7204

Fax: 970-352-0242

1150 O Street

P.O. Box 758

Greeley, CO 80632

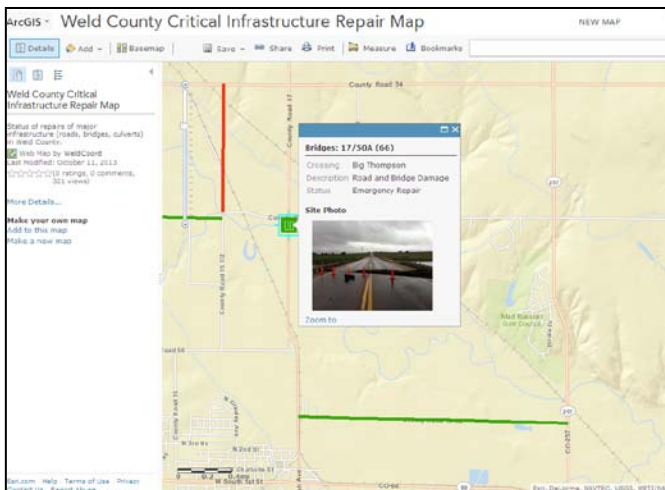
PRESS RELEASE

Date: 10/11/13

Contact: Jennifer Finch, 970-336-7203

WELD PUBLIC WORKS AND GIS DEPARTMENTS TEAM UP TO CREATE NEW INFORMATIONAL ROAD PROJECT MAP

WELD COUNTY, CO – The Weld County Department of Public Works along with the county’s GIS Department have created a new informational map for the public regarding road closures and projects.



The new map, which can be found at www.weldgov.com (Critical Infrastructure Repair Map), shows the location, photos and description of the road and bridge projects left in Weld County.

Near flooded areas, some roads that appear to be in passable condition remain barricaded. Public Works and the GIS team designed this informational map to better show the damage and explain the current road condition.

Weld County Public Works crews continue to work hard on road and bridge projects throughout the county.

Between September 12 and September 24, Weld County had more than 160 closed roads. Today, the number of closed roads is down to 21.

The Before and After Swipe Map, which Weld GIS assembled with images from Digital Globe Satellites, is also available on the county web site. This map features a slide bar which shows the pre- and during flood imagery for locations throughout the county. Because the imagery was collected from space, some images include cloud cover, but where possible, the company is providing imagery with less or no cloud cover. The images will be available until September of 2014.

###